

# June Wildflowers Spotter's Sheet



**Ragged Robin**  
*Silene flos-cuculi*

STAR  
FIND  
\*

Once a common wild flower, it is now classed as near-threatened. It is particularly beloved by long-tongued bees.

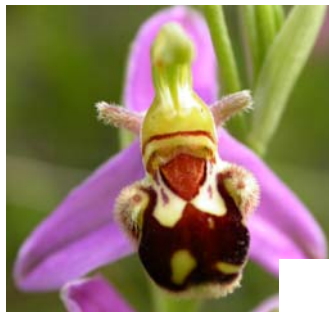
**Where to find it:**  
Wetter woods & meadows



**Agrimony**  
*Agrimonia eupatoria*

Also called 'church steeples' after its tall floral spikes. In Victorian times it symbolised "Thankfulness".

**Where to find it:**  
Hedgebanks, roadsides



**Bee Orchid**  
*Ophrys apifera*

In a clever ploy to attract pollinators, it not only looks like a bee, it also emits a female bee scent!

**Where to find it:**  
Pastures, banks, chalk



**Common Poppy**  
*Papaver rhoeas*

Poppy seeds only sprout when the earth around them is disturbed, hence why so many grew on the battlefields of WWI.

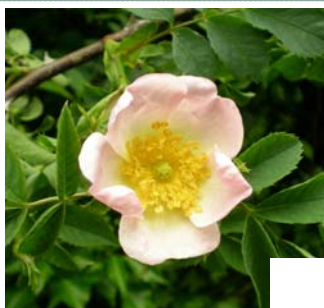
**Where to find it:**  
Disturbed ground



**Common Spotted-orchid**  
*Dactylorhiza fuchsii*

Our commonest orchid, as its name suggests. It can range in colour from deep lilac to light pink & even pure white.

**Where to find it:**  
Alkaline grasslands



**Dog-rose**  
*Rosa canina*

Syrup made from this wildflower's rosehips have twenty times as much Vitamin C as orange juice!

**Where to find it:**  
Hedgerows



**Foxglove**  
*Digitalis purpurea*

Its mottled markings were once thought to be the handprints of fairies. A single 'glove' can produce a million seeds.

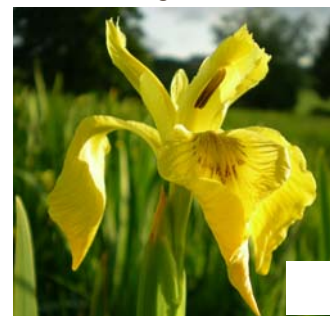
**Where to find it:**  
Woods and banks



**Oxeye Daisy**  
*Leucanthemum vulgare*

Often in bloom around the summer solstice. If cattle eat it, it can affect the flavour of their milk.

**Where to find it:**  
Grassy verges



**Yellow Iris**  
*Iris pseudacorus*

Also known as 'Yellow Flag', it grows where water runs shallow - hence it can indicate the presence of a ford.

**Where to find it:**  
Damp soil, water margins



**Yellow Rattle**  
*Rhinanthus minor*

Great for wildflower meadows as it restricts the growth of grasses by feeding off their nutrients.

**Where to find it:**  
Grassy banks